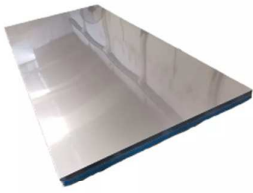


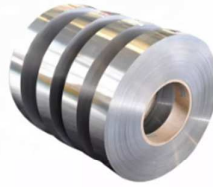
Stainless Steel



201 202 301 304 304L 316 316L
310 410 430 904 904L Stainless
Steel Sheet



201 202 301 304 310s 316 430 304l
316l Stainless Steel Pipe



201 304 310S 316L 430 904L
Stainless Steel Strip



201 304 316 316L 410 430 321
904L Stainless Steel Coil



201 304 316 410 420 316 904
Stainless Steel Bar



304 304l 202 430 316 316l 904
904L Stainless steel coil



A312 304 304L 316 316L Stainless
steel elbow



Stainless Steel Tee



201 202 301 304 304L 316 316L 310 410 430 904 904L Stainless Steel Sheet

Contact Sales Manager

Name: Micky

Email: sales@zhejiangcathayatrade.com

MOQ: 50 MT

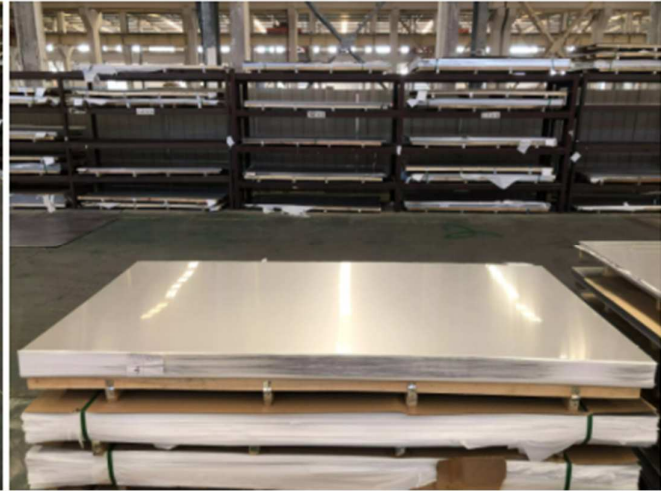
Product Detail

Material	Stainless steel sheet
Surface	2B/BA/NO.4/NO.5/HL mirror, other customized surfaces
Grade	DIN GB JIS BA AI SI ASTM EN etc
Certificate	MTC SGS BV
Technique	cold rolled
Thickness	0.3-3mm or as required

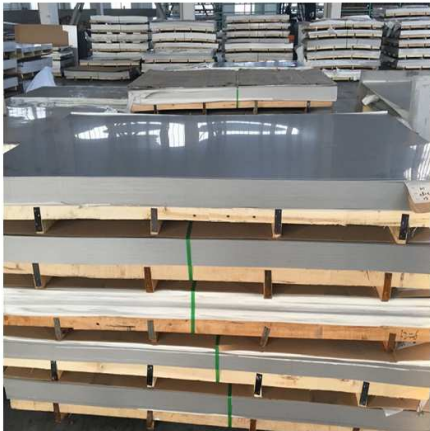
Width	1000-1500mm or as required
Length	2000-3000mm or as required
Application	This kind of steel sheet has a good oxidation resistance and intensity of medium temperature. So it is widely used in decoration, surgical instruments, household appliances, cookware, tableware, automobile and other industry construction.
MOQ	2 Metric ton
Delivery time	Within 7-15 workdays after receiving deposit or L/C
Export packing	Craft paper, Steel strips package or seaworthy packing
Capacity	250,000 tons/year



Cold rolling is a steel sheet obtained by further thinning the No. 1 steel sheet to a target thickness under room temperature conditions. Compared with hot-rolled steel, cold rolled steel has a more precise thickness, smooth and beautiful surface, and also has various superior mechanical properties, especially in terms of processability. Because cold-rolled raw coils are relatively brittle and hard, and are not suitable for processing, cold-rolled steel sheets are usually required to be annealed, pickled and surface smoothed before being delivered to customers. The maximum thickness of cold rolling is below 0.1 -8.0MM. For example, the thickness of cold rolled steel plate in most factories is below 4.5MM; the minimum thickness and width are determined according to the equipment capacity and market demand of each factory.



Stainless steel cold-rolled steel plate is a stainless steel plate produced by cold-rolling process, the thickness is not more than 3mm is thin plate, and the thickness is more than 3mm is thick plate. It is used to make corrosion-resistant parts, petroleum and chemical pipelines, containers, medical equipment, marine equipment, etc. The classification and grades are as follows:1. Austenitic steel In addition to the same as the hot rolled part (29 kinds), there are: (1) 2Cr13Mn9Ni4 (2) 1Cr17Ni7 (3) 1Cr17Ni82. Austenitic-ferritic steel In addition to the same as the hot rolled part (2 types), there are: (1) 1Cr18Ni11Si4AlTi (2) 1Cr21Ni5Ti3. Ferritic steel In addition to the same as the hot rolled part (9 types), there are: 00Cr174. martensitic steel In addition to the same as the hot rolled part (8 kinds), there are 1Cr17Ni2



Surface Finish	Defination	Application
2B	Those finished, after cold rolling, by heat treatment, picking or other equivalent treatment and lastly by cold rolling to given appropriate luster	Medical equipment, Food industry, Construction material, Kitchen utensils
BA	Those processed with bright heat treatment after cold rolling	Kitchen utensils, Electric equipment, Building I construction
No.1	The surface finished by heat treatment and picking or processes corresponding there to after hot rolling	Chemical tank, pipe

No.4	Those finished by polishing with No. 150 to No.180 abrasives specified in JIS R 6001	Kitchen utensils, Building construction, Medical equipment
HL	Those finished polishing so as to give continuous polishing streaks by using abrasive of suitable grain size	Building construction
8K	A mirror-like reflective surface by polishing with finer abrasives over 800 mesh	Reflector, Mirror, Interior-Exterior decoration



Stainless Steel Circle



Stainless Steel Sheet



Stainless Steel Coil



Stainless Steel Strip

Packaging

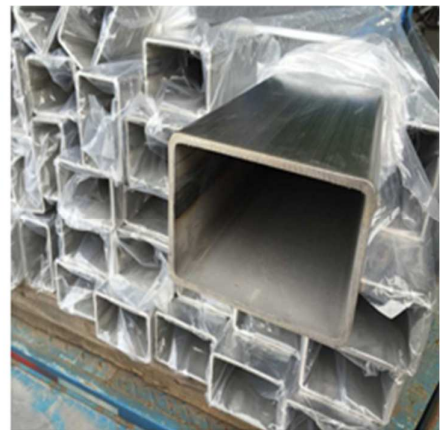
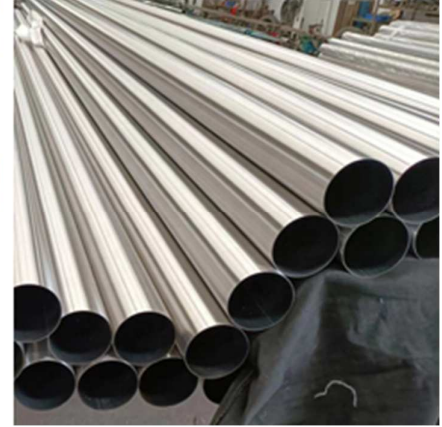
PACKING	General packaging, with waterproof paper binding, generally three binding belt.
	Standard export packing: waterproof paper and plastic + iron plate wrapped + at least three straps bound
	Quality packing: waterproof paper, plastic film + iron plate + at least three binding straps, which are fixed on iron or wood pallets.
Shipping	Transport containers.
	Shipment by bulk carrier.



	<p>201 202 301 304 310s 316 430 304l 316l Stainless Steel Pipe</p> <p>Contact Sales Manager</p> <p>Name: Micky</p> <p>Email: sales@zhejiangcathayatrade.com</p> <p>MOQ: 50 MT</p>
---	--

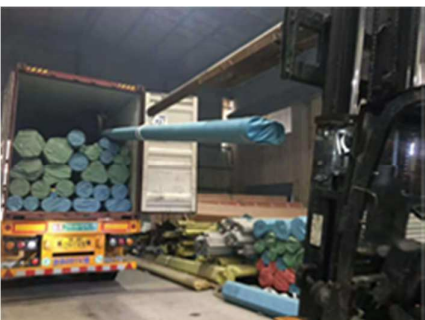
Product Detail	
Stainless Steel Pipe	
Product Standards	Food Grade Sanitary Tube: JIS G3447, KS D 3585, ASTM A270, EN 10357(DIN 11850), AS 1528.1, ISO 2037(NF A49-249)
	Heat exchanger tube: ASTM A249 / ASME SA249, GB / T 24593-2009, HG 20537.2
	Industrial pipe: ASTM A312, EN 10217-7, GB / T 12771-2008, HG 20537.3
	Drinking water tube: GB / T 19228
	Mechanical tube: ASTM A554, EN 10296-2
Production Size	Outer Diameter Range: 9.5~2000mm Thickness Range: 0.5~20mm Length: Up to 18.3 meters per piece. (Size can be customized)
Shape sections of tube	Round, square, rectangular
Usage of tube	Sanitary tubing: for food processing industry, beverage industry, sugar mill and so on; Heat exchanger tube: condenser, boiler, super heater, evaporator and so on; Industiral pipe: for petroleum delivery, gas delivery, petrochemical industry, wastewater treatment, drainage system, and so on; Mechanical tube: handrail, railings, balustrade, hence and so on.

Product Display



Stainless steel pipe is a hollow long round steel, which is widely used in petroleum, chemical, medical, food, light industry, mechanical instrumentation and other industrial pipelines and mechanical structural parts. In addition, when the bending and torsion strength are the same, the weight is lighter, so it is also widely used in the manufacture of mechanical parts. and engineering structures. Also often used as furniture and kitchen utensils.

Packaging





201 304 310S 316L 430 904L Stainless Steel Strip

Contact Sales Manager

Name: Micky

Email: sales@zhejiangcathayatrade.com

MOQ: 50 MT

Product Detail

Commodity	Austenitic, Ferritic, Martensitic, Duplex, Cold rolled, Hot rolled
Grade	201, 202, 301, 304, 304j1, 304l, 321, 309s, 310s, 2205, 409l, 410, 410s, 420, 420j1, 420j2, 430, 439, 409l, 443, 444, etc
Standard	ISO, JIS, ASTM, AS, EN, GB
surface	N0.1, N0.2, N0.3, N0.4, N0.5, N0.6, N0.7, N0.8, 2D, 2B, HL, BA, 6K, 8K, etc
Thickness	0.1-200mm
Width	10-2000mm
MOQ	5MT
Packaging	Export standard, seaworthy
Trade Term	FOB, CFR, CIF
Transport Type	Container, bulk and train
Loading port	Shanghai, qingdao, tianjin, etc
Payment terms	T/T, L/C at sight, West Union, D/P, D/A, Paypal
Delivery time	15-35 days after confirmed order



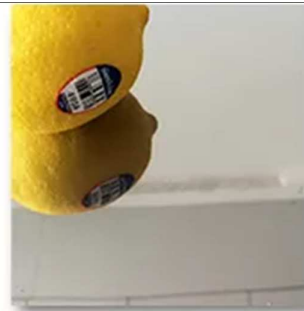
Surface Finish	Definition	Application
2B	Finished by heat treatment , picking or equivalent cold rolling , followed by skin pass to obtain adequate luster surface.	With bright and smooth surface ,easy for further grinding to obtain brighter surface ,suitable for medical instruments ,milk containers ,tableware and so on.
BA	Bright heat treatment after cold rolling.	Structual members .etc.kitchen utensil ,cutlery ,eletric applicances ,medical instruments ,building decorations ,etc.
NO.3/NO.4	Polished with No.150-240 abrasives.	Milky food processing equipment , medicalinstruments ,building decorations.
HL	Finshed by polishing with abrasives of suitable grain size to obtain continuous streaks.	Building decorations ,such as elevators ,escalators ,door etc.
6K/8K	A mirror-like reflective surface ,which is obtained by polishing with successively finer abrasives and buffing extensively with all gritlines are removed.	Buliding entrances,bulkding column casting ,elevator's wall doors ,counters,sculptures etc.



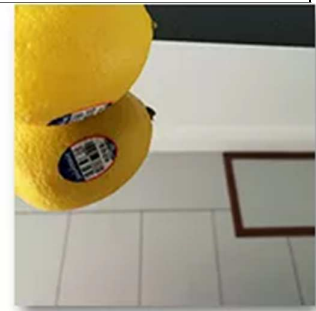
2B



2BA



BA



8K



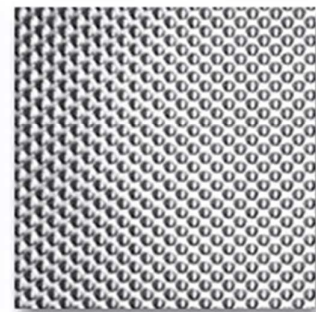
NO4



Hairline



SB



Embossed



**201 304 316 316L 410 430 321
904L 304 304I 202 430 316 316I
904L Stainless Steel Coil**

Contact Sales Manager

Name: Micky

Email: sales@zhejiangcathayatrade.com

MOQ: 50 MT

Product Detail

Product Name	Stainless Steel Coils
Length	as required
Width	3mm-2000mm or as required
Thickness	0.1mm-15mm or as required
Standard	AISI,ASTM,DIN,JIS,GB,JIS,SUS,EN,etc
Technique	Hot rolled stainless steel coil / cold rolled stainless steel coil
Surface Treatment	2B/BA/NO.4/HL/8K/Mirror or according to customer requirement
Thickness Tolerance	±0.01mm
Material	201, 202, 301, 302, 303, 304, 304L, 304H, 310S, 316, 316L, 317L, 321,310S 309S, 410, 410S,420, 430, 431, 440A,904L etc
Application	It is widely used in high temperature applications, medical devices, building materials, chemistry, food industry, agriculture,ship components. It also applies to food, beverage packaging, kitchen supplies, trains, aircraft, conveyor belts, vehicles, bolts, nuts, springs,and screen.
MOQ	1 ton , We can accept sample order.
Shipment Time	Within 15-20 workdays after receiving deposit or L/C
Export Packing	Waterproof paper, and steel strip packed. Standard Export Seaworthy Package.Suit for all kinds of transport,or as required



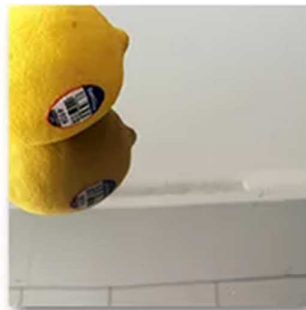
Product Display

Surface Finish	Defination	Application
2B	Those finished, after cold rolling, by heat treatment, picking or other equivalent treatment and lastly by cold rolling to given appropriate luster	Medical equipment, Food industry, Construction material, Kitchen utensils
BA	Those processed with bright heat treatment after cold rolling	Kitchen utensils, Electric equipment, Building I construction

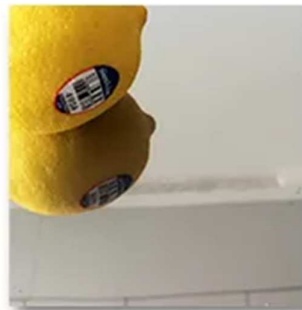
No.1	The surface finished by heat treatment and pickling or processes corresponding there to after hot rolling	Chemical tank, pipe
No.4	Those finished by polishing with No.150 to No.180 abrasives specified in JIS R 6001	Kitchen utensils, Building construction, Medical equipment
HL	Those finished polishing so as to give continuous polishing streaks by using abrasive of suitable grain size	Building construction
8K	A mirror-like reflective surface by polishing with finer abrasives over 800 mesh	Reflector, Mirror, Interior-Exterior decoration



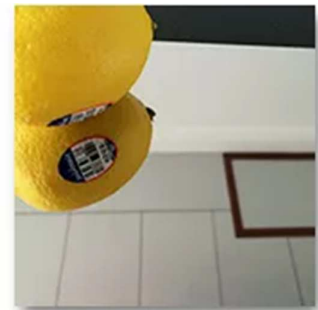
2B



2BA



BA



8K



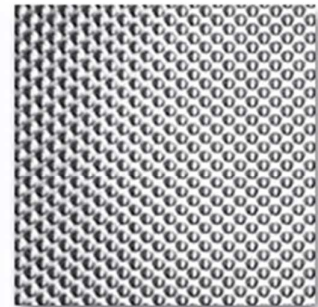
NO4



Hairline



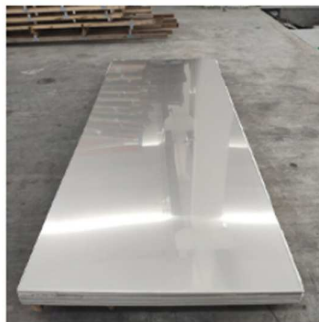
SB



Embossed



Stainless Steel Circle



Stainless Steel Sheet



Stainless Steel Coil



Stainless Steel Strip



201 304 316 410 420 316 904

Stainless Steel Bar

Contact Sales Manager

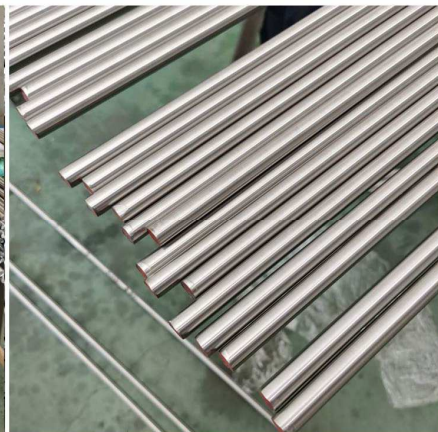
Name: Micky

Email: sales@zhejiangcathayatrade.com

MOQ: 50 MT

Product Detail

Grade	201, 202, 304, 304L, 304H, 309, 309S, 310, 310S, 316, 316L, 316Ti, 317, 317L, 321, 347, 347H, 409L, 420, 420J1, 420J2, 430, 431, 434, 436L, 439, 441, 443, 444, 904L, 2205, 2507, 253MA, 254Mo, 631, 654MO, 17-4pH, N08367 (AL 6XN), etc.
Surface Finish	polish bright black
Standard	JIS/SUS/GB/DIN/ASTM/AISI/EN
Technique	Cold Rolled; Hot Rolled
Diameter	3-480mm
Length	3000mm, 4000mm, 5800mm, 6000mm, 12000mm, or as required.
Application	Widely used in petroleum, foodstuff, chemical industry, construction, electric power, nuclear, energy, machinery, biotechnology, paper making, shipbuilding, boiler fields.
Lead Time	7-15 working days after the receipt of 30% deposit
Payment Terms	30% TT for deposit, 70% TT / 70% LC at sight balance before shipment
Price Terms	FOB, EXW, CIF, CFR
Packing	Standard Seaworthy Package or according to customer's requirements
Container Size	0ft GP: 5898mm (Length) x 2352mm (Width) x 2393mm (High) 24-26CBM 40ft GP: 12032mm (Length) x 2352mm (Width) x 2393mm (High) 54CBM 40ft HC: 12032mm (Length) x 2352mm (Width) x 2698mm (High) 68CBM



Every process will be checked by responsible QC which insures every product's quality.



A312 304 304L 316 316L

Stainless steel elbow

Contact Sales Manager

Name: Micky

Email: sales@zhejiangcathayatrade.com

MOQ: 50 MT

Product Detail

Material	Stainless Steel 304/304L/316L
Shape	Round
Production Standards	ASTM A270 , EN 10357 , DIN 11850 , AS 1528.1
Process Characteristics	Inner Welded Seam Removed ; Online Bright Solution Anneal ; Inner Electro Polish And Mechanical Polish ;
Surface	Mill Finish ;Bright Or Mirror ; Satin Brushed ; Sand Blast ;
Application	Petrochemical industry, chemical fertilizer industry, oil refining industry, oil and gas industry, light industry and food industry, pulp and paper industry, energy and environmental industries.
Test	Flaring test ; Flattening test ; Bending Test ; Hydraulic Test ; Eddy Current test
Design	OEM / ODM / Customized
Certificate	ISO9001 ; ISO14001; ISO 18001; TUV ;





Product Description:

ASME BPE sanitary butt weld elbows fittings are designed specifically for use in pharmaceutical applications to connect stainless steel pipes which need to turn directions, so material is always 316 stainless steel. These fittings need extended tangents to accommodate the orbital weld heads used heavily in the autogenously welding procedures used in the joining of pharmaceutical fittings. BPE elbow fittings dimension are outlined in the Bioprocess Equipment standard.

The butt weld elbows are machined by high class CNC machine, and the surface can meet high hygienic requirement.

The surface finish of our BPE butt weld elbow 20 Ra Mechanical ID polish and 32 Ra polished OD. After the PL and PC finishes, we get into the additional electropolish finishes- PL and PM.

Applications:

- * All companies in need of hygiene and high purity
- * End-users in pharmaceutical, food, biotechnology, dairy
- * OEMs
- * Piping and Installations Companies
- * Engineering Contractors
- * Maintenance, Repair and Overhaul Companies
- * "Hygienic Equipment" means all equipment,
- * Components, assemblies and systems



Stainless Steel Tee

Contact Sales Manager

Name: Micky

Email: sales@zhejiangcathayatrade.com

MOQ: 50 MT

Product Detail

Product Name	Pipe fitting
Material	Stainless Steel: ASTM A403 WP304, 304L, 310, 316, 316L, 321, 347, 904L Duplex Steel :UNS S31803 S32205 S32750 S32760 etc Nickely Alloy Steel: N08020 ,601 ,625,4400,800,800h 825 etc Nickely Alloy Steel: ASTM A234 WP1, WP5, WP9, WP11, WP22, WP91 Low Temperature: ASTM A420 WPL 1, WPL 3, WPL 6
Standard	ANSI, ASTM, DIN, JIS, BS, ISO, GB, SH, AND HG etc
Thickness	Sch5S-Sch160, XS, XXS
Type	Stainless steel , Duplex steel , Nickely Alloy SR , LR , Elbow
Size	1/2"-48"
Surface treatment	Sand Rolling, Sand Blasting , Acid Cleaning.
Applications	Petroleum, chemical, power, gas, metallurgy, shipbuilding, construction, etc

Our main products including stainless steel pipe, stainless steel plate, stainless steel bar , stainless steel coil , galvanized sheet, galvanized pipe, carbon sheet, aluminium sheet, aluminium pipe Etc.

FAQ

Q: What about the quality control in your factory ?

A: We have our own laboratory, also our own quality control system and professional quality inspectors. We will ship the products after strictly quality inspection.

Q: How does your price quote ?

A: 1. Lowest material cost in best quality.

2. All the products are designed and produced by ourselves to save products' cost.

3. Quote the price in hours with the best price to help the partner to open the market.

Q: Do you support OEM or ODM?

A: Yes! We accept client 's design and we produce according to each client's requirement.

Q: What about the payment terms?

A: Our normal payment terms is 30% T/T as the prepayment and 70% balance need to be paid off before shipment, we also could accept L/C for client who have been familiar with our factory for a few years .

Q: Do you provide samples ? Does it free or charge ?

A: Yes, we could offer the sample for free, but the shipping cost will be charged in your hand.